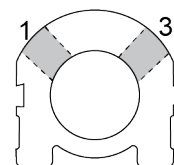
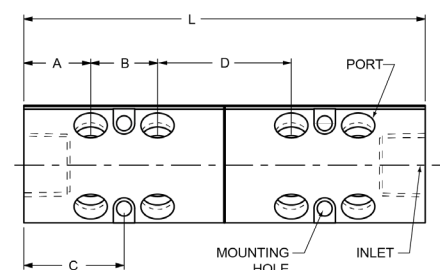


Duoflow® Aluminum Manifolds

PCS Company provides Duoflow® Aluminum Manifolds that are divided internally with a stainless steel plug and O-rings. The anodized red and blue colors protect the manifold from corrosion and denotes the coolant supply and return sides. This easy identification of the manifold also helps with consistent and repeatable coolant connections for faster mold changes. The Duoflow® manifolds have a short footprint to help mount in small areas and on the mold. The narrow port spacing will only accommodate hose barbs or quick connection fitting.



- 3/4", 1", and 1-1/2" inlet sizes (NPT)
- 1/4", 3/8" and 1/2" port sizes (NPT)
- Red & Blue Anodized to identify Supply and Return circuits
- Port spacing for quick disconnect and hose barb fittings
- 150 psi - Max operating pressure
- 210°F - Max operating temperature
- Body Material - Anodized Aluminum
- Divider - Stainless Steel
- O-Rings - EPDM
- Port Location - Sides 1 and 3



Item Number	Inlet Size NPT	Total Ports	Port Size NPT	Ports Per End	A	B	C	D	Overall Length L	Weight (lb)
6SDA-8-2-13-YZ	3/4"	8	1/4"	4	1"	1"	1.5"	2"	6"	1.1
6SDA-12-2-13-YZ	3/4"	12	1/4"	6	1"	1"	1.5"	2"	8"	1.4
6SDA-16-2-13-YZ	3/4"	16	1/4"	8	1"	1"	1.5"	2"	10"	1.7
8SDA-8-3-13-YZ	1"	8	3/8"	4	1.25"	1.25"	1.875"	2.25"	7.25"	2.4
8SDA-12-3-13-YZ	1"	12	3/8"	6	1.25"	1.25"	1.875"	2.25"	9.75"	3
8SDA-16-3-13-YZ	1"	16	3/8"	8	1.25"	1.25"	1.875"	2.25"	12.25"	3.7
12SDA-8-4-13-YZ	1 1/2"	8	1/2"	4	1.75"	1.5"	2.5"	2.5"	9"	4.9
12SDA-12-4-13-YZ	1 1/2"	12	1/2"	6	1.75"	1.5"	2.5"	2.5"	12"	6.2
12SDA-16-4-13-YZ	1 1/2"	16	1/2"	8	1.75"	1.5"	2.5"	2.5"	15"	7.5